

Steam sterilizers
Matachana SC500 I

The sterilizers are designed and manufactured using the latest technologies available in the market to achieve the best results in terms of energy savings and reducing water consumption. An example is the steam generator (in the devices fitted with it), which has an **integrated "smart" economizer system**. It is fully controlled by the sterilizer's CPU, so that the right amount of steam for the program is produced, adapting to the needs of pressure and temperature of the program selected and run. It is specifically designed to let in the appropriate water volume in the generator and at the right time of the cycle to minimize the consumption of treated water and power of the generator.



Stainless steel front panel 1.4301 (AISI-304) (optional)

Features

- Chamber and jacket made of high quality stainless steel 1.4404 (AISI-316L).
- Pneumatic sliding vertical door (or doors), built in stainless steel 1.4404 (AISI-316L). With high resistance silicone seal locking system.
- Front panel, hinged door type to improve access for service and with rounded edges for easy cleaning.
- Chamber and steam manometers on the loading area frontal.
- Chamber manometer on the unloading area frontal (2 door option).
- Highly performant vacuum by means of water ejector (Venturi system). It is a faster, silent and water-saving system, compared to other devices in the market.
- Circuits in contact with steam made of stainless steel.
- Highly visible backlit panel, integrated into the frontal of the sterilizer. Allows the user to know the status of device quickly and easily.
- Control by industrial double microprocessor with 2 independent systems for monitoring and recording 5.7" TFT colour touch screen.
- Digital alphanumeric thermal printer for cycle recording.
- Programs: Vacuum Test, Bowie & Dick, Solids between 114 and 135 °C with modifiable parameters.

Regulations

The sterilizers from SC500 I, comply with the directives on pressure vessel 97/23/EC, European Machine Directive 2006/42/EC, electromagnetic compatibility (EMC) 2014/30/EU, low voltage 2014/35/EU, 2011/65 EU RoHS Restriction of Hazardous Substances. It is built according to quality standard ISO 9001 awarded by the Notified Body Lloyd's Register LRQA Ltd. which guarantees that the company Antonio Matachana, S.A. performs quality management in design, production, delivery and after-sales service of its products.

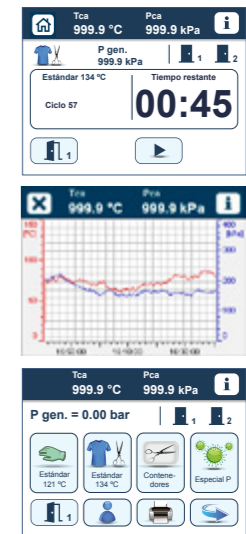
Models	SC500V-11 SC500E-11	SC500V-21 SC500E-21	SC501V-11 SC501E-11	SC501V-21 SC501E-21	SC502V-11 SC502E-11	SC502V-21 SC502E-21
Technical specifications	1 door	2 doors	1 door	2 doors	1 door	2 doors
Total dimensions (mm)						
Height	1824	1824	1824	1824	1824	1824
Width	900	900	900	900	900	900
Depth	995	1009	1342	1355	1622	1635
Chamber Dimensions (mm) (*)						
Height	500	500	500	500	500	500
Width	500	500	500	500	500	500
Depth	675	1675	1020	1020	1300	1300
Chamber volume (liters)	167	167	252	252	321	321
Power (kW)						
WITH generator (models E)	21	21	21	21	21	21
WITHOUT generator (models V)	2	2	2	2	2	2

Options

- Programs:
 - Liquids into non-hermetically sealed receptacles with adjustable temperature between 105 and 135 °C, with product probe inside the chamber.
 - Low temperature, with adjustable values between 70 and 105 °C.
 - Gravity.
 - Filters sterilization.
- Remark: according to customer needs, specially designed or tailored made programs can be studied.*
- Air treatment system through a 0.2 μ self sterilizable filter condensate line and condensates treatment inside the chamber, for potentially biocontaminated areas and materials (ex. BSL-2, BSL-3 zones, etc.).
- Air tightness zones through a drawer type enclosure built entirely in stainless steel and independent pressurization of doors' seals.
- Video-recorder.
- Connecting to external cooling system with substantial water savings and reduced cycle time.
- Cooling system by jacket water flood and counterpressure of sterile air in the chamber.
- Touch screen in unloading area.
- Special chamber polish.
- IQ-OQ documentation.
- 21 CFR part 11.
- EN 285 (applicable requirements).
- Other options: under request.

All the power of technology in sterilization

- Working with the sterilizer is very easy. The user operates from the touch screen. Starting from the main menu, the screen guides the user, through the Submenus, toward the operations required.
- The follow-up of the cycle can be carried out directly from the screen, given that it allows a graphic visualization of the process in "real time".
- The control unit can integrate the Teleservice option ("on line" remote maintenance) and is provided with access doors to connect it to the PC and the bar code reader (optional).





MATACHANA GROUP

Innovation is the way forward

Since our foundation 50 years ago, our mission has been to provide the best service, bringing our knowledge and field experience to our customers to facilitate their daily work, allowing them to be efficient in the production whereas keeping rigorously the quality.

Our history has taken us from the beginnings in 1962 to the transformation in 2000 in MATACHANA GROUP, with its subsidiaries in Germany, France, USA, Argentina, Malaysia and China, as well as the collaboration of direct distributors in over 110 countries.

In MATACHANA GROUP we are aware that Training and Service contribute decisively to achieve customer satisfaction. For this reason, we have always invested in the development of these two areas of activity, which enables a direct contact with customers and help us to develop together a continuous improvement process.

Technical Assistance Service

A service of engineers, highly skilled expert technicians and support staff, all committed to ensure the proper equipment operation and condition.

Training Academy



Committed to the responsibility to obtain the optimum operation from our equipment, in MATACHANA GROUP we invest in the training of future users.

In addition, we offer training courses regularly in the 5 continents, providing this service to all our customers.

Environmentally friendly

The sterilizers are designed and manufactured using the latest technologies on the market to achieve the best results in terms of energy savings and reduction in water consumption.

Our Production Center complies with the ISO 14001 Environmental Management System and ISO 50001 Energy Management.

Quality

The MATACHANA devices are developed, manufactured and tested within a strict quality control according to the International Standard ISO 9001.